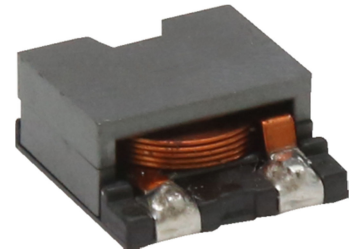


Features

- Compact size using flat wire, and SMD type.
扁平线小尺寸封装，贴片类型
- Low radiation noise by magnetically shielded construction
闭合磁路封装，低辐射
- High current, Low resistance.
大电流，低电阻
- Operating temperature : -40°C~+125°C.
工作温度：-40°C~+125°C



Applications

- high efficiency DC/DC converters. 高效 DC/DC 转换器
- Single and polyphase buck converters. 单相、多相降压转换器
- Filter for audio applications. 音频滤波应用
- Optimized for high current boost applications. 大电流升压应用优化

Electrical characteristics

Part number 料号	Inductance 电感量 μH	DC resistance 直流电阻 mΩ max	DC saturation current 直流饱和电流 A max.(typ.)			Temperature rise current 温升电流 A max.	
			ΔL ≦ 10%	ΔL ≦ 20%	ΔL ≦ 30%	ΔT ≦ 20°C	ΔT ≦ 40°C
EEC136-102	1.0 ± 20%	2.6(2.3)	32(33.3)	33(34)	33.5(34.5)	9.5	13
EEC136-222	2.2 ± 20%	2.6(2.3)	15(16.8)	17(18.6)	18(19)	9.5	13
EEC136-272	2.7 ± 20%	2.6(2.3)	12(13.2)	13(14.1)	14(14.9)	9.5	13
EEC136-332	3.3 ± 20%	6.0(5.5)	11.5(12.6)	12.5(13.3)	13.5(14.1)	7.1	9.4
EEC136-472	4.7 ± 20%	6.0(5.5)	9.5(10.6)	11(11.9)	12(12.8)	7.1	9.4
EEC136-682	6.8 ± 20%	6.0(5.5)	8(9.2)	9(10)	9.5(10.3)	7.1	9.4
EEC136-822	8.2 ± 20%	10.8(9.8)	7.5(8.8)	8.5(9.2)	9(9.6)	5.5	7.6
EEC136-103	10 ± 10%	10.8(9.8)	6.2(7)	7(7.8)	7.5(8)	5.5	7.6

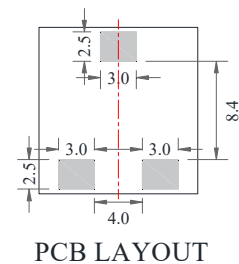
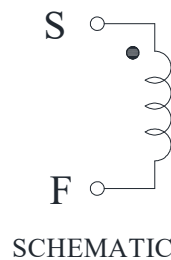
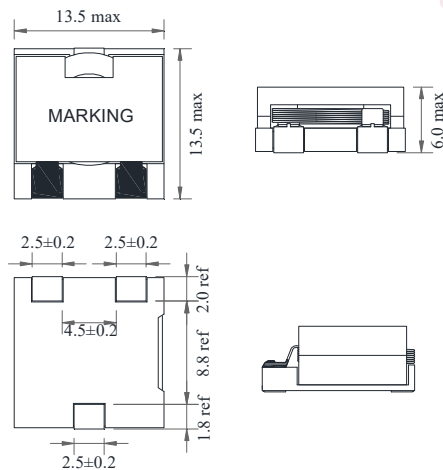
Remark

- Inductance is measured with a LCR meter 4284A or equivalent.
Test frequency at 100kHz
- DC resistance is measured with 16502 Milliohm Meter , or equivalent.
Reference ambient temperature 25°C

备注

- 电感量测试采用 4284A 数字电桥或同等仪器；
测试频率 100KHz
- 直流电阻测试采用 16502 毫欧表或同等仪器；
环境温度 25°C

Dimensions



Electrical Characteristic Curve

